

# Steinberg CC121 Firmware V1.50 Update Guide (For Windows)

---

Thank you for choosing a Steinberg product.

The CC121 Firmware Updater lets you update the firmware of the CC121.

This document explains how to update the firmware of the CC121 by using a Windows computer connected to the CC121 via USB.

## ■ Precautions

- **Please note that the CC121 may be damaged if you fail to follow these instructions properly, or turn off the CC121 or disconnect the cable while the update is in progress.**
- The user assumes full responsibility for the update.
- If the update fails, and the CC121 still does not operate correctly even after you execute the update once again, please contact your Yamaha dealer.
- Copyrights of this software and documentation are owned exclusively by Yamaha Corporation.
- Reproducing or modifying all or parts of this software or its documentation without permission is strictly prohibited.
- The screen shots in this guide are for use with this update procedure only and may be different from the actual screen shots.
- Windows is a registered trademark of Microsoft(R) Corporation in the United States and other countries.
- The company names and product names in this document are the trademarks or registered trademarks of their respective companies.

## ■ System requirements

Your system must satisfy the following requirements in order to update successfully.

A Windows computer equipped with the following conditions:

- Yamaha USB-MIDI Driver is installed and works properly on the computer.

## ■ Included Files

This folder contains the following files:

•update_guide_win_en.pdf	This document (PDF file)
•releasenotes_en.pdf	Describes the update history
•CC121Update.exe	The update program
•CC121_MAIN_V150.MID	The update data

## ■ Preparing for the update

Before starting the update program, quit all other programs. While the update is in progress, do not start any other programs or switch between windows.

If your computer enters Sleep or Energy Save modes, data transfer to the CC121 may stop. Therefore, you should disable these functions to prevent this from happening. We also recommend that you do not use any screen saver or similar background programs.

Make sure that “CC121Update.exe” and “CC121\_MAIN\_V150.MID” reside in the same folder.

Even if you intend on connecting multiple CC121 devices to the computer, connect only one device when updating. Only one device can be updated at a time.

## ■ Update procedure

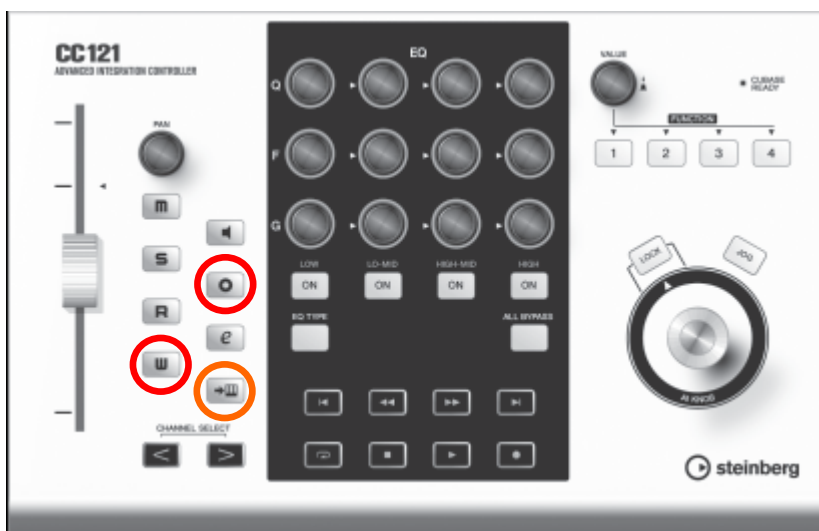
1. Turn the power off for the CC121.
2. Connect a computer directly to a CC121 (without using a hub) by using an USB cable.  
Be sure to disconnect all other USB devices, except the one to be updated.
3. Hold down the [STOP] button and turn the power on for CC121.



Hold the [STOP] button continuously.

While the [STOP] button is held, some LEDs will light. This indicates the firmware version information.

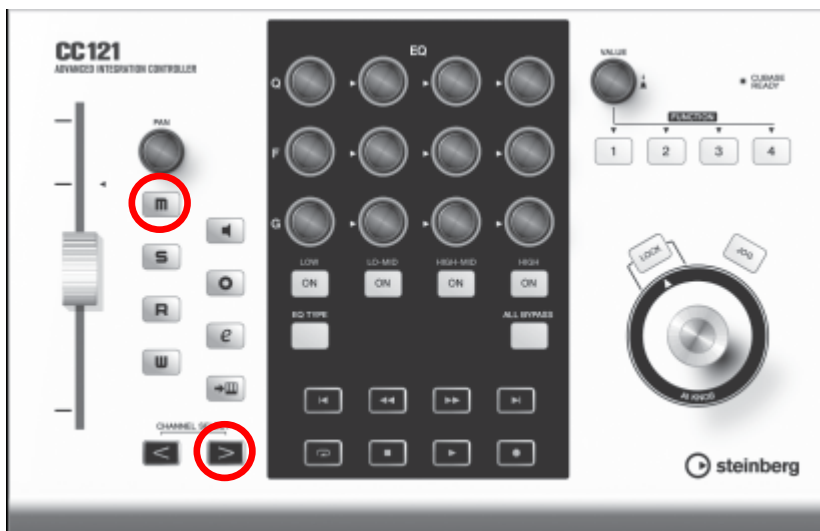
4. Confirm the LEDs **do not light** as the following pattern, then go on to step 5.



If the LEDs light as the pattern above, the update is not required.

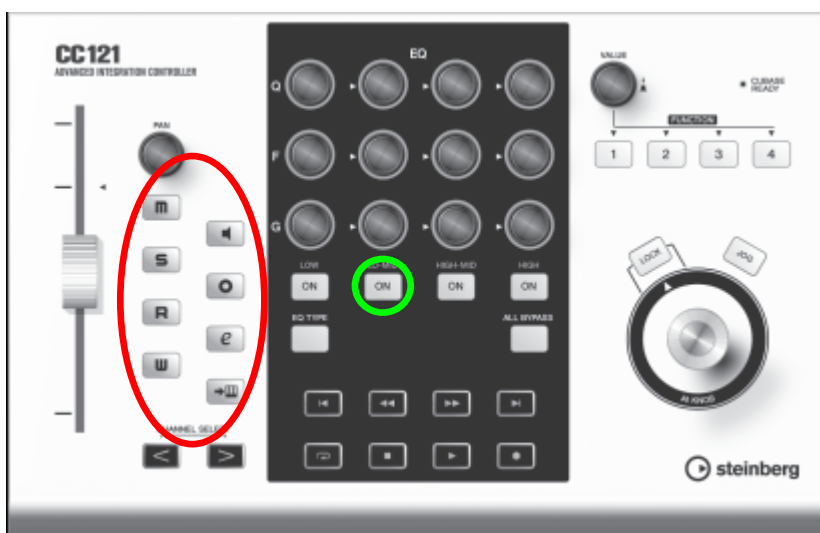
5. Release the [STOP] button, then turn the power off for CC121.

6. Simultaneously hold down the [m] and [>] buttons and turn the power on for CC121.



The CC121 will boot up in update mode. When booting up in update mode, the front panel indicators of the CC121 will light as follows:

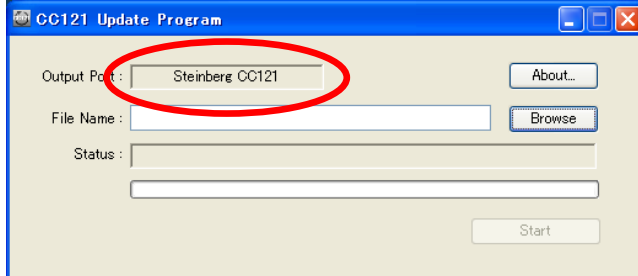
- The LEDs of channel section will light in order from lower to upper.
- [LOW-MID ON] button lights up



Confirm the LEDs light as the pattern above, then release the [m] and [>] buttons.

**7. Double-click “CC121Update.exe” to start the program.**

When the program works correctly, the Output Port column will display “Steinberg CC121.”



- If an error message appears, check the cable connection and system requirements, and start the program again.
- For details about the error messages, see page 7.

**8. Select the Update data to click the [Browse] button in the dialog.**

The Update data is “CC121\_MAIN\_V150.MID” which is in the same folder as “CC121Update.exe.”



- If the update file is not correct, the Status column will display “File format error!!”

**9. Click the [Start] button to start the update process.**

An “Installing...” message will appear in the Status column.

The update process may take approximately two minutes to complete.



When the update data transfer is completed, the message “Don’t close this dialog until all LED start blinking” will appear in the Status column. **Keep in mind however, that the whole update process is not complete until all LED start blinking.** While the update is in progress, never turn off the device or disconnect the cable. Please note that the device may be damaged if such a situation happens accidentally while the update is in progress.

**10. When the LEDs of channel section start quick flashing, press [X] button to quit the CC121 Update Program.**

## ■ Confirming the update

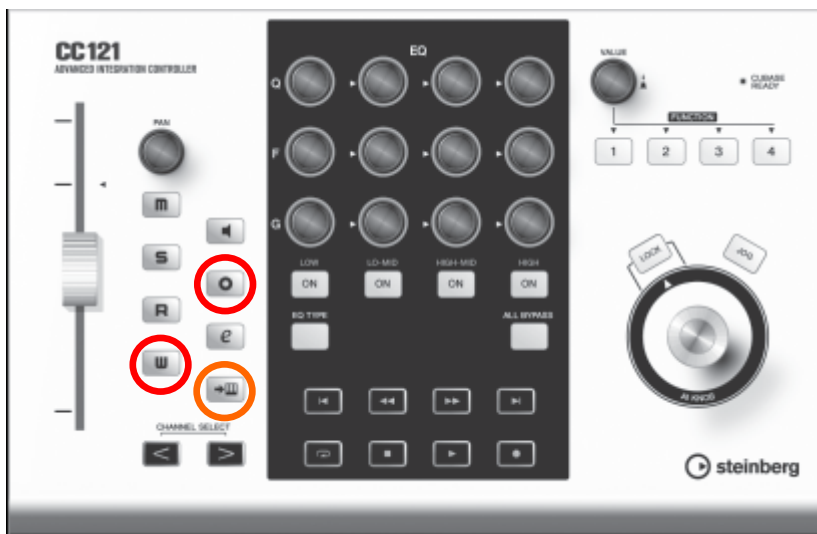
Confirm the version information by following the procedure below.

**11. Turn the power off for the CC121.**

**12. Hold down the [STOP] button and turn the power on for CC121.**

Hold the [STOP] button continuously.

**13. Confirm the LEDs light as the following pattern.**



Release the [STOP] button. The update procedure is now complete.

## ■ Error messages



- If the same error message appears each time you try to update, the device may need repairing, in which case you should contact your Yamaha dealer.

Port not found!!	The computer cannot recognize the CC121 because the Yamaha USB-MIDI Driver is not installed.  Make sure to install the Yamaha USB-MIDI Driver correctly or make sure to connect the CC121 to the computer via a USB cable. And also make sure that the CC121 is turned power on in update mode.
File format error!!	Illegal data was selected.